

stair treads-profile suitable for 10 - 11,3 mm LED Stripes or Cut light

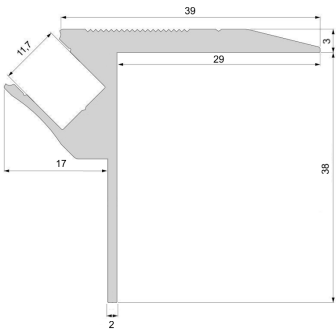
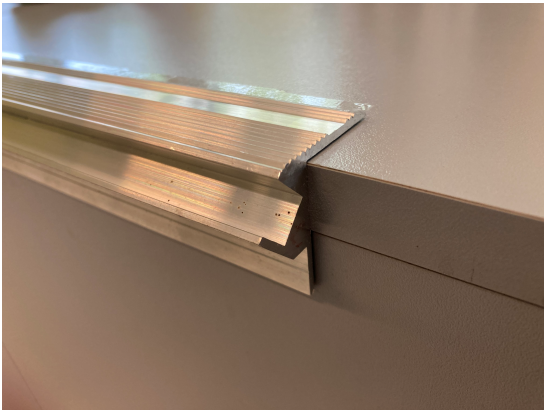
The perfect light is not always planned from the start. With the mounting and corner profiles, you can also integrate linear light at a later stage.

Characteristics

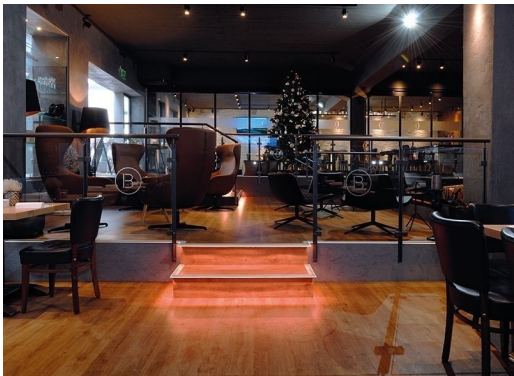
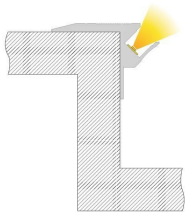
Material	aluminum
Color	matt silver
Optic	anodized

Dimensions & Weight

Length	2000 mm
Width	48 mm
Height	41 mm
Product Weight	1700 g



Mounting



Mounting Options

- if the profile is subjected to stress and used to be perpetrated by foot, the profile has to be screwed permanently. Recommendation: The profile must lie flat and has to be firmly bolted minimum every 20 cm to the ground by using countersunk screws
- if the profile will be not stressed or perpetrated by foot, it is not necessary to screw the profile
- for adherence we recommend an elastic neutral high-class silicone sealing compound for structural glazing
- A heat-resistant double-sided tape
- Foam tape for uneven surfaces
- as centering drilling aid, has the profile of the rear upper area through a small gap